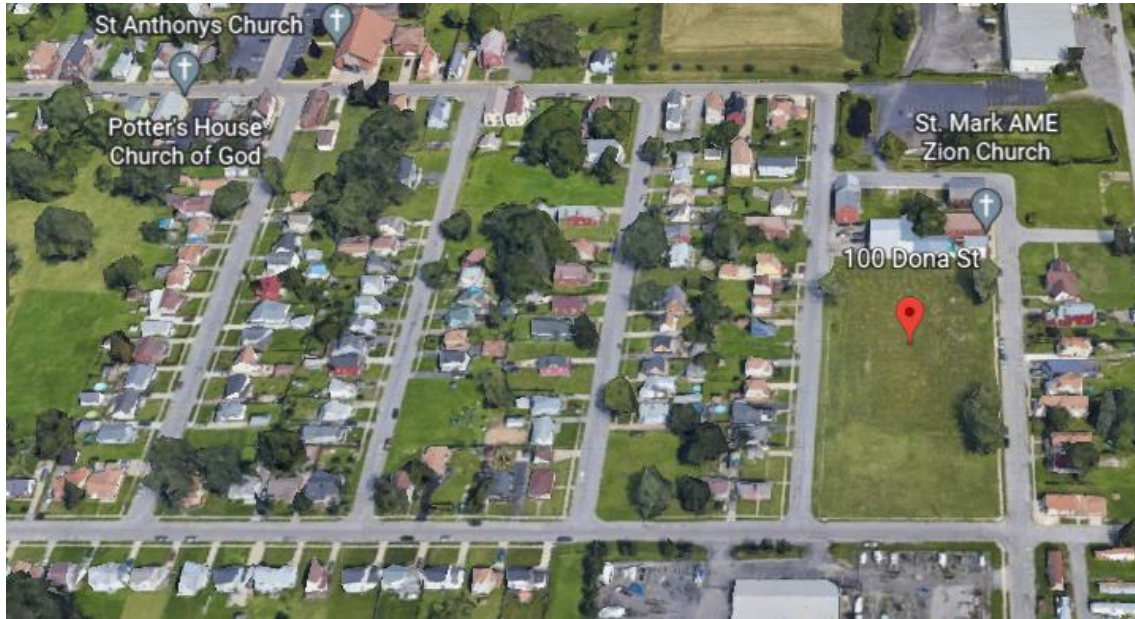


100 Dona Street, Lackawanna, N.Y.

Brownfield and Opportunity Zone Parcel - Multifamily Residential Housing Development



Located off of NYS Route 5 in a residential neighborhood minutes from downtown Buffalo and a revitalized waterfront, a multifamily residential housing development on this 2+ acre parcel would be a perfect compliment to this neighborhood community.

Note: Property identifiers are for placement only. Not to scale.

CONTACT US FOR MORE INFORMATION:

- 716-827-6677 or lackawannadevelopment@lackny.com

Parcel At a Glance

Acres Available	2.16
County/City	Erie County / City of Lackawanna, NY
Zoning	Mixed Residential
Special Designation	City of Lackawanna Brownfield Opportunity Area Federal Opportunity Zone
Special Incentives	Potential for Brownfield Tax Credits

Utilities

Natural Gas	National Fuel
Electric	National Grid
Sewer & Water	Erie County

Travel

100 Dona Street is ~ 7-10 minutes by vehicle from:

- NYS Thruway I-90
- NYS Thruway I-190
- Downtown Buffalo and waterfront
- Peace Bridge (entry to Canada)

